

Megan's

Complements
Fabrics by Jo Morton

Blue Baskets Quilt



Quilt designed and made by Candy Hargrove
Machine-quilted by Freda Smith
Quilt size: 68" x 68"

6/9/10



makower uk®

1384 Broadway
New York, NY 10018
(800) 223-5678
www.andoverfabrics.com

Megan's Blue Baskets Quilt

Introducing Andover Fabrics new collection: Complements by Jo Morton

Quilt designed and made by Candy Hargrove

Machine-quilted by Freda Smith

Quilt finishes 68" x 68"

25 Basket blocks 8" x 8"

16 Square-in-a-Square blocks 8" x 8"

Pieced Basket blocks combine with Square-in-a-Square blocks to make a very pretty diagonal-set quilt. Appliquéd flowers arranged on some of the Basket blocks add a touch of summer and a whimsical feeling.

Fabric Requirements

		Yardage	
Fabric A	blocks	Fat eighth	4878-G
Fabric B	blocks	1 yard	4883-W
Fabric C	blocks, appliqué	Fat eighth	4884-E
Fabric D	blocks	Fat quarter	4890-B
Fabric E	blocks	Fat eighth	4890-P
Fabric F	blocks	Fat eighth	4891-G
Fabric G	blocks, appliqué	Fat eighth	4892-G
Fabric H	blocks	Fat eighth	4892-Y
Fabric I	blocks, appliqué	Fat eighth	4893-G
Fabric J	blocks	Fat eighth	4893-LE
Fabric K*	blocks, border,		
binding		2½ yards	4894-B
Fabric L	blocks	Fat eighth	4894-O
Fabric M	blocks	Fat eighth	4894-P
Fabric N	blocks	Fat eighth	4894-RP
Fabric O	blocks	1⅝ yards	4896-B
Fabric P	blocks	Fat eighth	4896-P
Fabric Q	blocks	Fat eighth	4896-Y
Fabric R	blocks	Fat eighth	4897-B
Fabric S	blocks	Fat quarter	4897-Y
Fabric T	blocks	Fat eighth	4898-E
Fabric U	blocks, appliqué	Fat eighth	4898-G
Fabric V	blocks	Fat eighth	4898-O
Fabric W	blocks, appliqué	Fat quarter	4898-P
Fabric X	blocks, appliqué	Fat quarter	3790-E
Fabric Y	blocks	Fat eighth	4241-E
Backing		4⅜ yards	4896-Y

*includes binding

½ yard 18"-wide fusible web

Cutting Directions

Note: WOF designates the width of fabric from selvedge to selvedge (approximately 42" wide).

Fabrics A, G, I & U

Cut (8) squares 2⅞" x 2⅞" and cut in half once diagonally to make 16 triangles each fabric

Fabric B Cut (13) squares 4⅞" x 4⅞" and cut in half once diagonally to make 25 triangles
Cut (88) squares 2⅞" x 2⅞" and cut in half once diagonally to make 175 triangles

Fabrics C, F and N

Cut (4) squares 3¾" x 3¾" and cut in half once diagonally to make 8 triangles each fabric
Cut (4) squares 2¼" x 2¼" and cut in half once diagonally to make 8 triangles each fabric

Fabrics D, S and X

Cut (6) squares 4⅞" x 4⅞" and cut in half once diagonally to make 12 triangles each fabric
Cut (2) squares 2½" x 2½"

Fabric E Cut (2) squares 3¾" x 3¾" and cut in half once diagonally to make 4 triangles

Fabrics H, J, L, Q, V and Y

Cut (2) squares 3¾" x 3¾" and cut in half once diagonally to make 4 triangles each fabric
Cut (2) squares 2¼" x 2¼" and cut in half once diagonally to make 4 triangles each fabric

Fabric K Cut (4) squares 12⅝" x 12⅝" and cut in half twice diagonally to make 16 side triangles
Cut (2) squares 6⅝" x 6⅝" and cut in half once diagonally to make 4 corner triangles
Cut (7) strips 6" x WOF
Cut (7) strips 2½" x WOF for binding

Fabric M Cut (6) squares 2¼" x 2¼" and cut in half once diagonally to make 12 triangles

(continued on next page)

Megan's Blue Baskets Quilt

Fabric O Cut (25) squares $4\frac{7}{8}$ " x $4\frac{7}{8}$ " and cut in half once diagonally to make 50 triangles
Cut (63) squares $2\frac{7}{8}$ " x $2\frac{7}{8}$ " and cut in half once diagonally to make 125 triangles
Cut (50) rectangles $2\frac{1}{2}$ " x $4\frac{1}{2}$ "

Fabric P Cut (2) squares $2\frac{1}{4}$ " x $2\frac{1}{4}$ " and cut in half once diagonally to make 4 triangles
Cut (4) squares $3\frac{3}{4}$ " x $3\frac{3}{4}$ " and cut in half once diagonally to make 8 triangles

Fabric R Cut (4) squares $4\frac{7}{8}$ " x $4\frac{7}{8}$ " and cut in half once diagonally to make 8 triangles
Cut (4) squares $2\frac{1}{2}$ " x $2\frac{1}{2}$ "

Fabric T Cut (4) squares $4\frac{7}{8}$ " x $4\frac{7}{8}$ " and cut in half once diagonally to make 8 triangles
Cut (2) squares $2\frac{1}{2}$ " x $2\frac{1}{2}$ "

Fabric W Cut (6) squares $4\frac{7}{8}$ " x $4\frac{7}{8}$ " and cut in half once diagonally to make 12 triangles
Cut (4) squares $2\frac{1}{2}$ " x $2\frac{1}{2}$ "

Backing Cut (2) panels 42 " x 76 " and piece to fit quilt top with 4 " overlap on all sides

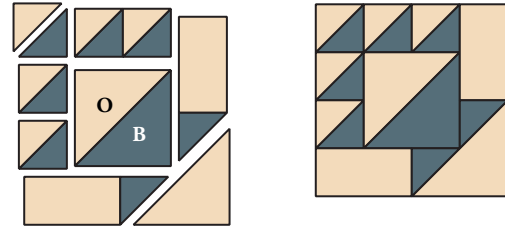


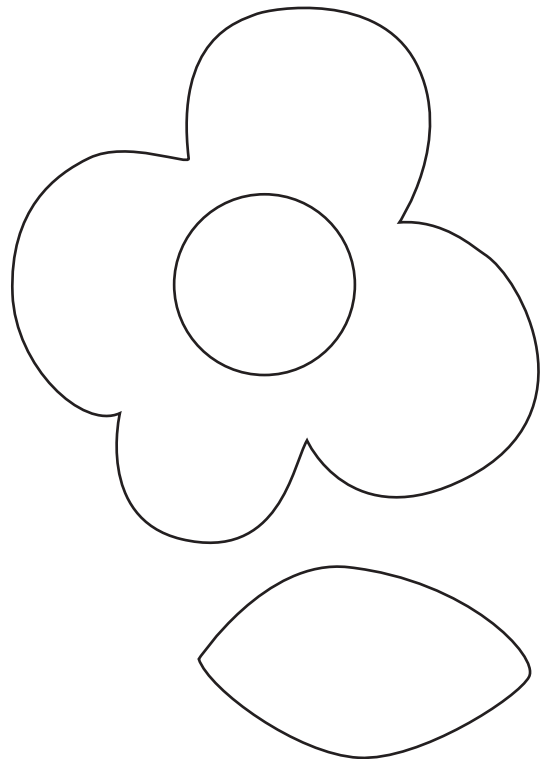
Diagram 1 - Basket Blocks

Adding Appliquéd Flowers

- Trace seven flower and 10 leaf shapes onto the paper side of the fusible web leaving $\frac{1}{2}$ " between shapes. Cut out shapes, leaving a margin around each one. Fuse the shapes to the wrong side of fabrics leftover from cutting, choosing colors as desired. Cut out shapes on traced lines; remove paper backing.
- Arrange and fuse the shapes to the basket blocks as desired or referring to the photograph of the quilt for suggestions. Note: You may add a flower to each basket or add flower motifs to the borders to make this quilt all your own. Shapes will be stitched down in the quilting or you may stitch them in place using your favorite appliqué method.

Making the Basket Blocks

- Refer to Diagram 1 for block piecing.
- To complete one Basket block, select one $4\frac{7}{8}$ " fabric B and two $4\frac{7}{8}$ " fabric O triangles, two $2\frac{1}{2}$ " x $4\frac{1}{2}$ " fabric O rectangles, five $2\frac{7}{8}$ " fabric O triangles and seven $2\frac{7}{8}$ " fabric B triangles.
- Sew a $2\frac{7}{8}$ " fabric O triangle to a $2\frac{7}{8}$ " fabric B triangle to make a small B-O unit; repeat to make five small B-O units. Press seams toward fabric B triangles.
- Sew a $4\frac{7}{8}$ " fabric O triangle to a $4\frac{7}{8}$ " fabric B triangle along the diagonal to make a large B-O triangle. Press seam toward the fabric B triangle.
- Join two small B-O units, press seam in one direction and add to one O side of the large B-O unit. Repeat with three small B-O units and add to the remaining O side of the large B-O unit to complete the basket top unit.
- Sew a $2\frac{7}{8}$ " fabric B triangle to one end of a $2\frac{1}{2}$ " x $4\frac{1}{2}$ " fabric O rectangle; repeat to make a reverse unit. Press seams toward the triangles. Sew these units to the B sides of the basket top unit. Press seams.
- Add the remaining $4\frac{7}{8}$ " fabric O triangle to complete one Basket block. Press seam.
- Repeat steps 1–7 to make a total of 25 Basket blocks.



Full Size Appliqué Patterns

Making the Square-in-a-Square Blocks

11. Refer to Diagram 2 for block piecing.
12. To complete one Square-in-a-Square block, select one 2½" fabric S square, four 2¼" fabric P triangles, four 2⅞" fabric A triangles, four 3¾" fabric J triangles and four 4⅞" fabric R triangles.
13. Sew a fabric P triangle to each side of the fabric S square. Press seams toward the triangles. Continue adding triangles to each side of the pieced unit, adding A, then J and then R to complete the block, pressing seams toward the latest triangle addition as you sew.

14. Repeat steps 10 and 11 with remaining squares and triangles to complete a total of 16 different blocks referring to each block drawing for placement of pieces in each block.

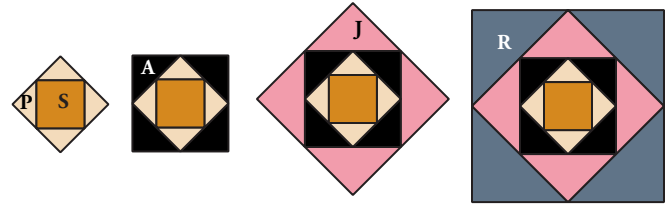
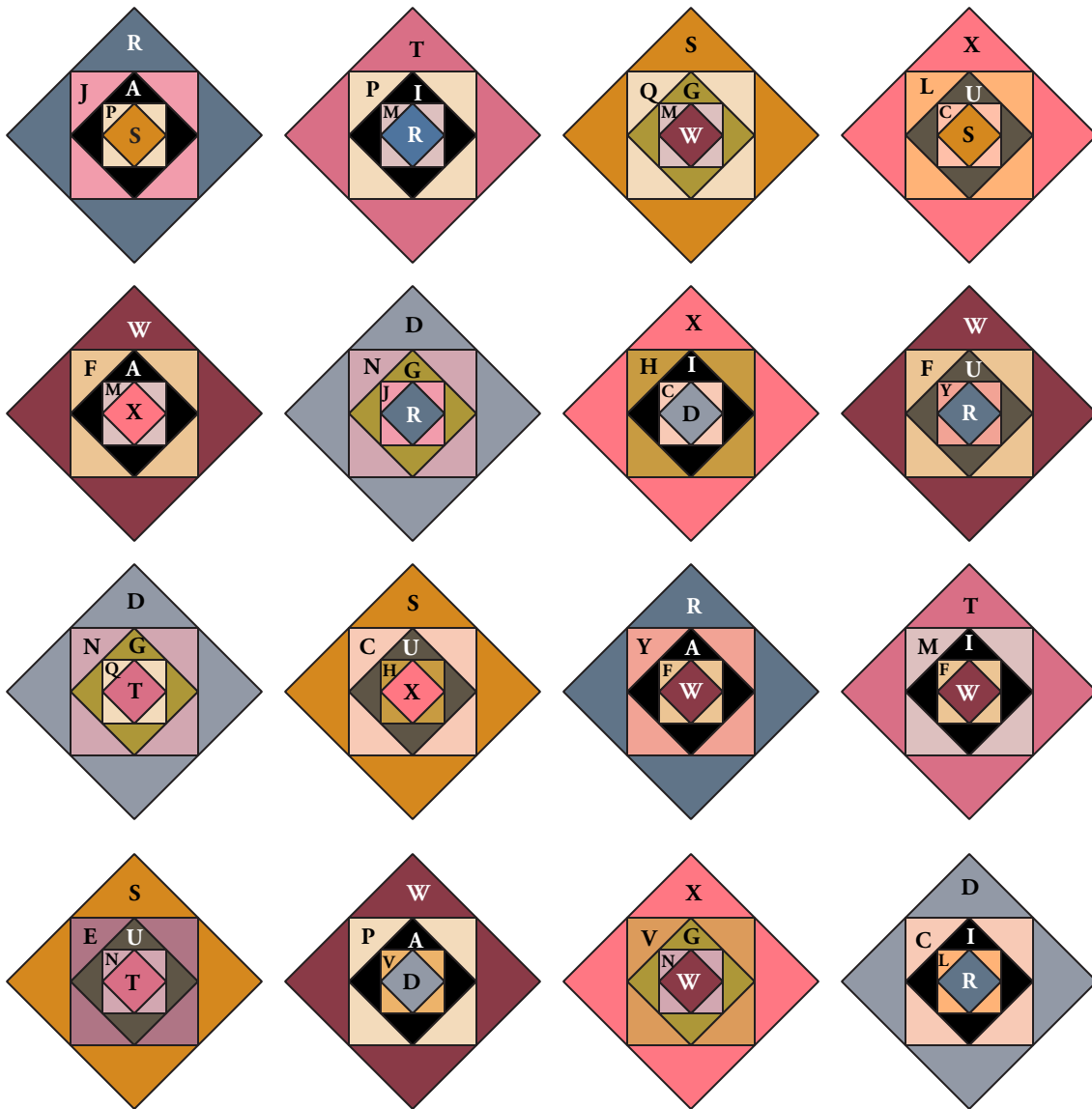


Diagram 2 - Square-in-a-Square Blocks



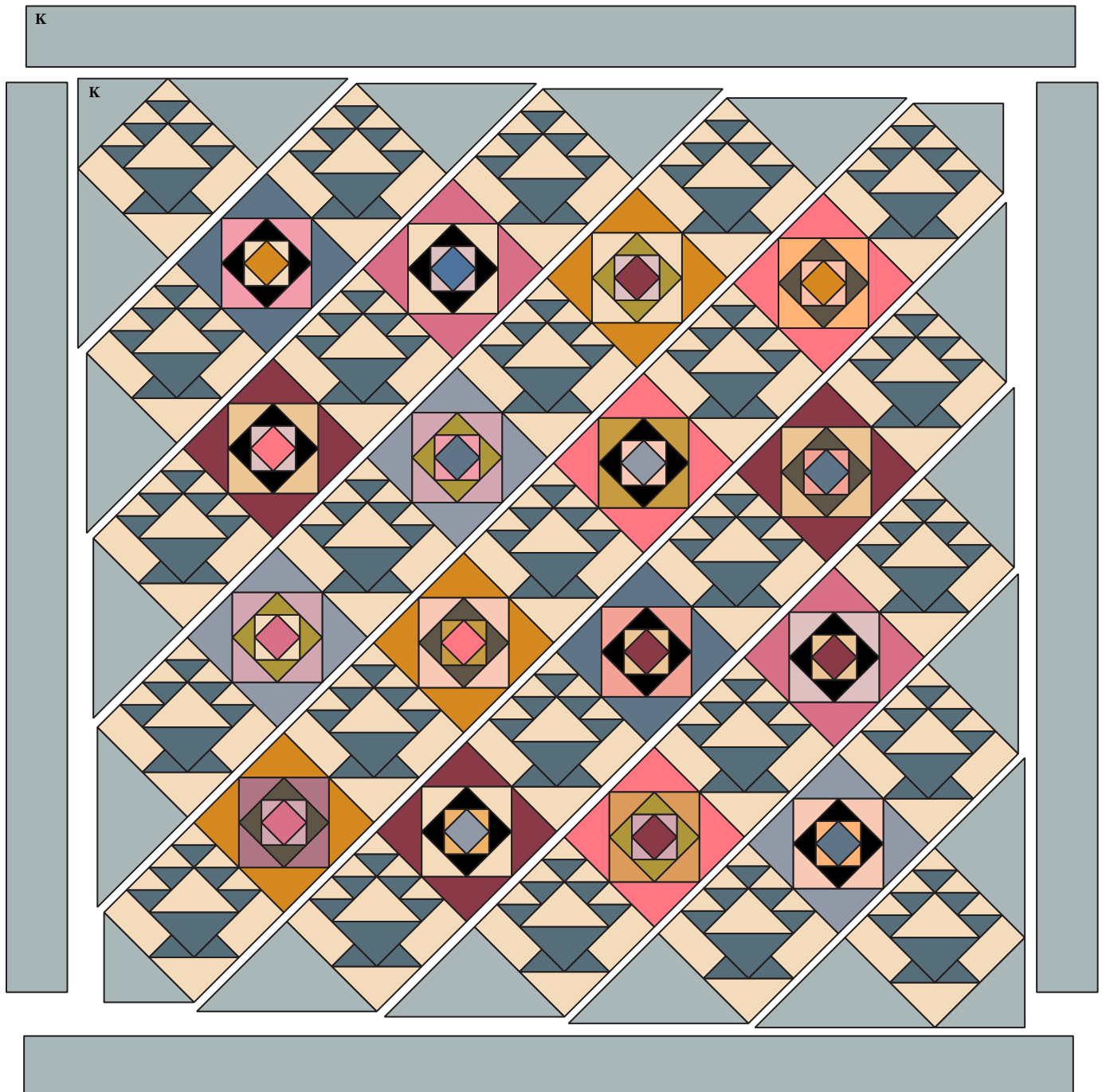
Megan's Blue Baskets Quilt

Quilt Assembly

15. Refer to the Quilt Diagram for piecing the quilt center and adding borders.
16. Arrange and join the Basket blocks with the Square-in-a-Square blocks in diagonal rows adding the fabric K corner triangles at the corners and the fabric K side triangles at the ends of the diagonal rows. Press seams toward the Square-in-a-Square blocks and the fabric K triangles.
18. Join the 6"-wide fabric K strips on the short ends to make one long strip. Press seams open. Cut the strip into two 57½" strips and two 68½" strips.
19. Sew the 57½" strips to opposite sides and the 68½" strips to the top and bottom of the pieced center. Press seams toward the strips.

Finishing the Quilt

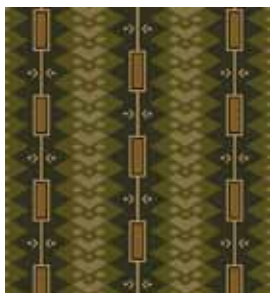
20. Layer quilt top with batting and backing. Quilt in the ditch of seams and as desired. Bind to finish the quilt.



Quilt Diagram

Complements

by Jo Morton



4878-G



4883-W



4884-E



4890-B



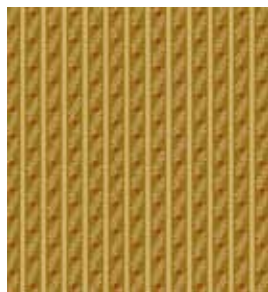
4890-P



4891-G



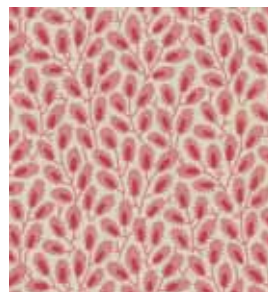
4892-G



4892-Y



4893-G



4893-LE



4894-B



4894-O



4894-P



4894-RP



4896-B



4896-P



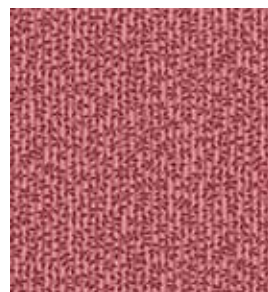
4896-Y



4897-B



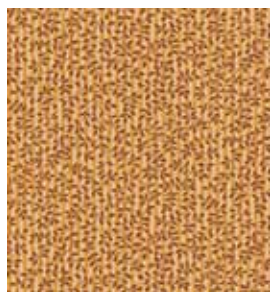
4897-Y



4898-E



4898-G



4898-O



4898-P



3790-E



4241-E